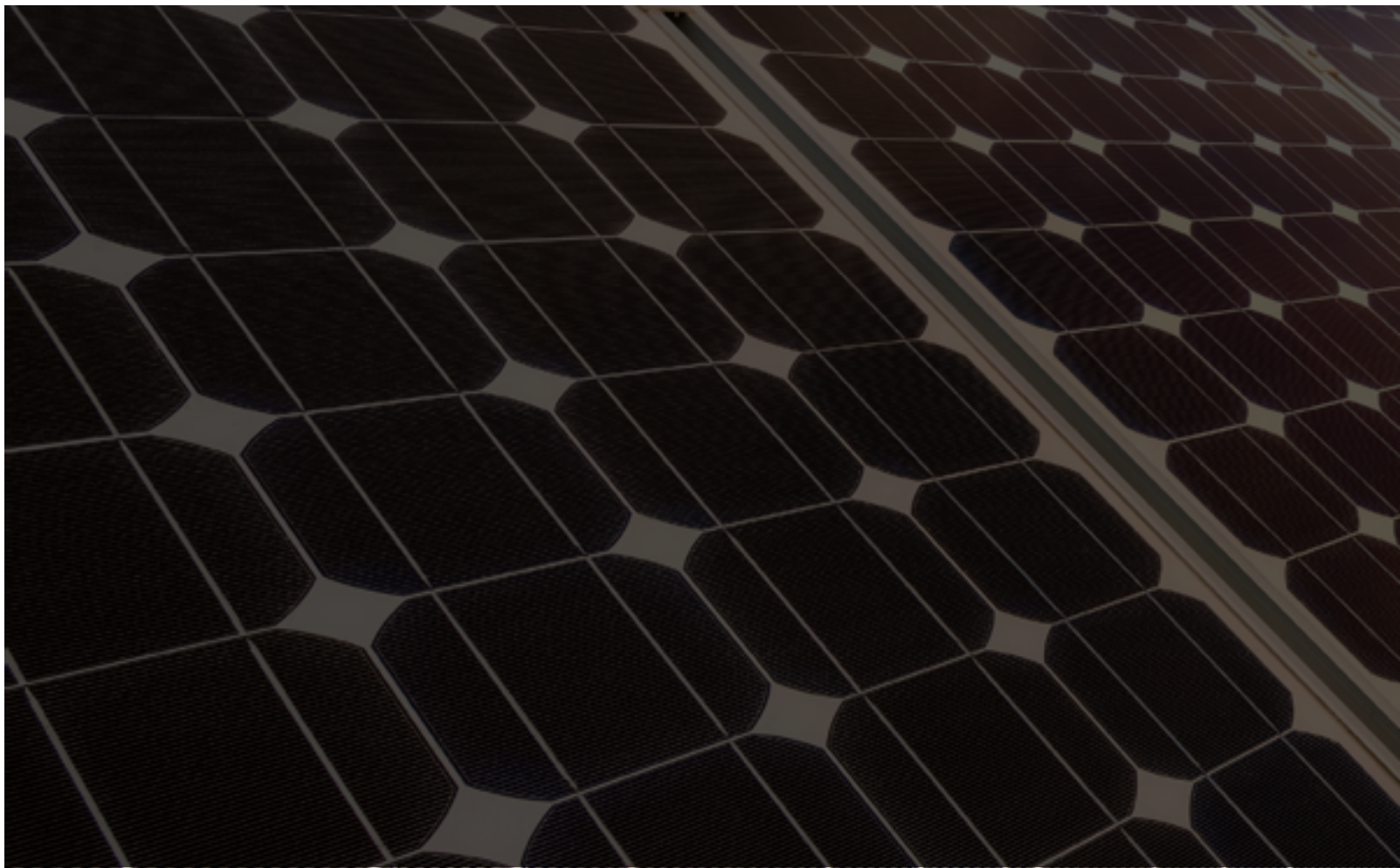




SOLUNA™

POWER DESIGNED FOR NIGHT AND DAY





ENVIRONMENT

Power designed for clean and affordable energy. Becoming eco-friendly can start at home.



SECURITY

The safety and security of your home is one more thing you don't have to worry about.



INDEPENDENCE

Gain freedom from the standards of electricity, powering your home with solar energy.

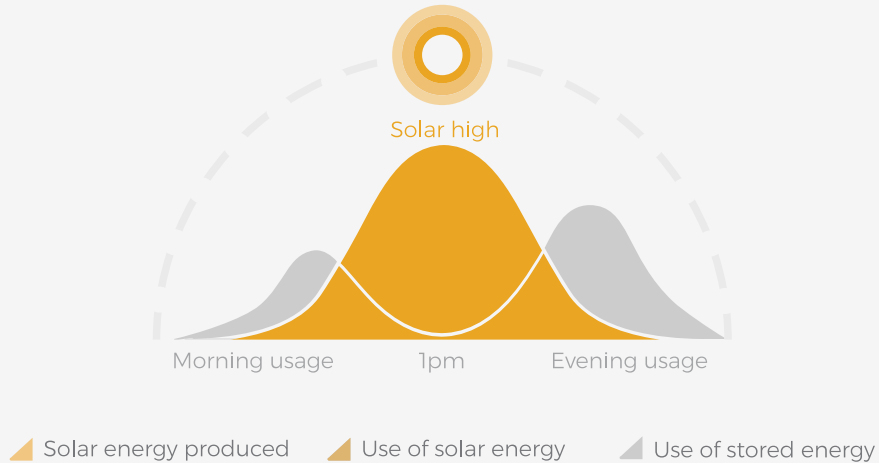


ENVIRONMENT

POWER DESIGNED FOR CLEAN AFFORDABLE ENERGY

SYNC WITH THE SUN

Most energy is used morning and evenings. Soluna powerbanks minimize waste and pollution by leveraging the power of the sun 24 hours a day.



CLEAN AND AFFORDABLE ENERGY

Once your Soluna Powerbank is full, surplus power is sent to the local grid, saving costs and the environment.



1. Solar energy 2. Solar panel 3. PowerBank 4. Local Grid

A woman and a young child are seen from behind, looking out a large, floor-to-ceiling window. The woman is kneeling on a light-colored carpet, and the child is standing next to her, reaching out to touch the glass. The window looks out onto a dense, green forest or garden. The scene is dimly lit, suggesting dusk or dawn.

SECURITY

POWER DESIGNED FOR YOUR SAFETY

Soluna power banks are designed provide you and your family peace of mind in the event of a power outage.

INTRODUCING
SOLUNATM
SOLAR POWER BANKS



POWER BANK FEATURES

- Intelligent power management
- Simple user controls, power data history analysis, and programming
- Capacitive touch screen interface
- Secure battery access door
- Extruded aluminum housing with premium bead blasted finish
- Height-adjustable threaded appliance-grade feet for stability and level appearance



BATTERY MODULE

TECHNICAL SPECS



POWER

Capacity	4 kWh
Depth of Discharge	80%
Voltage	48V DC
Efficiency	94% Round Trip
Power Output	5kW
Certification	Cell: UL1642 Module: refer to UN38.3 and CE design
Operating Temperature	-10° to 45°C / 14°F to 113°F
Storage Temperature	-30° to 60°C / -22°F to 140°F
Humidity Conditions	5% to 95%

MISCELLANEOUS

Installation	Floor Install in an indoor and or covered outdoor area. Install inside Power Bank Casing
Weight	50kg / 110 lbs
Dimensions	(H x W x D) 485mm x 600mm x 260mm 19" x 23.5" x 10"

POWER BANK S4

TECHNICAL SPECS



POWER

Capacity	4 kWh
Depth of Discharge	80%
Voltage	230V AC 50/60Hz
Power Output	3000 VA
Battery Modules	1
Scalability	Adjustable
Certification	Cell: UL1642 Module: Refer to UN38.3 and CE design System: Refer to CE design
Operating Temperature	-10° to 50°C / 14°F to 122°F
HMI interface	7" LCD

MISCELLANEOUS

Installation	Floor Install in an Indoor and or covered outdoor area.
Weight	150kg / 330 lbs
Dimensions	(H x W x D) 1200mm x 700mm x 440mm 47" x 27.5" x 17"
Warranty	5 year standard warranty, <i>Optional 5 year extension</i>

POWER BANK S8

TECHNICAL SPECS



POWER

Capacity	8 kWh
Depth of Discharge	80%
Voltage	230V AC 50/60Hz
Power Output	5000 VA
Battery Modules	2
Scalability	Adjustable
Certification	Cell: UL1642 Module: Refer to UN38.3 and CE design System: Refer to CE design
Operating Temperature	-10° to 50°C / 14°F to 122°F
HMI interface	7" LCD

MISCELLANEOUS

Installation	Floor Install in an Indoor and or covered outdoor area.
Weight	210kg/ 463 lbs
Dimensions	(H x W x D) 1200mm x 640mm x 700mm 47" x 25 " x 27.5"
Warranty	5 year standard warranty, <i>Optional 5 year extension</i>

POWER BANK S12

TECHNICAL SPECS



POWER

Capacity	12 kWh
Depth of Discharge	80%
Voltage	230V AC 50/60Hz
Power Output	5000 VA
Battery Modules	3
Scalability	Adjustable
Certification	Cell: UL1642 Module: Refer to UN38.3 and CE design System: Refer to CE design
Operating Temperature	-10° to 50°C / 14°F to 122°F
HMI interface	7" LCD

MISCELLANEOUS

Installation	Floor Install in an Indoor and or covered outdoor area.
Weight	270kg/ 596 lbs
Dimensions	(H x W x D) 1200mm x900mm x 700mm 47" x 35.5 " x 27.5"
Warranty	5 year standard warranty, <i>Optional 5 year extension</i>

POWER BANK S12-NA

TECHNICAL SPECS



POWER

Capacity	12 kWh
Depth of Discharge	80%
Voltage	230V AC 50/60Hz
Power Output	5000 VA
Battery Modules	16

Certification	Cell: UL1642
	Module: Refer to UN38.3 and UL1973 design
	System: Refer to UL design

Operating Temperature	-10° to 50°C / 14°F to 122°F
HMI interface	4" LCD

MISCELLANEOUS

Installation	Floor. Install in an Indoor and or covered outdoor area.
--------------	--

Weight	200kg/ 441 lbs
--------	----------------

Dimensions	(H x W x D) 1600mm x 500mm x 350mm 63" x 20 " x 14"
------------	---

Warranty	5 year standard warranty, <i>Optional 5 year extension</i>
----------	--



INDEPENDENCE

POWER DESIGNED TO SET YOU FREE

HOME STORAGE SYSTEM SPECIFICATION

PV input	S4	S8	S12	S12 NA
Max. recommended DC power [W]	3300	5000	5000	6500
Max. DC voltage[V]	550	550	550	500
Normal DC operating voltage[V]	360	360	360	300
MPPT voltage range [V]	125-530	125-530	125-530	250-450
Max. input current [A]	12	12/12	12/12	13/13
Max. short circuit current [A]	15	15/15	15/15	16/16
Number of MPP trackers	1	2	2	2
Strings per MPP tracker	1	1	1	1
EPS Output connect with AC output				
EPS rated power [VA]	2000	2000	2000	NA
EPS rated voltage, Frequency	230VAC 50/60HZ	230VAC 50/60HZ	230VAC 50/60HZ	NA
EPS rated current [A]	8.7	8.7	8.7	NA
EPS Peak power[VA]	1.5×Prated, 10s	1.5×Prated, 10s	1.5×Prated, 10s	NA
Total harmonic distortion (THD)	<3%	<3%	<3%	NA
Switch time	<5s	<5s	<5s	NA
Inverter Output				
AC nominal power [W]	3000	4600	4600	5000
Nominal AC voltage; range [V]	230VAC 50/60HZ; 180~270VAC	230VAC 50/60HZ; 180~270VAC	230VAC 50/60HZ; 180~270VAC	L- N:120V±3%;L-L:240V±3%
AC nominal current [A]	13	20	20	21
Max. AC current [A]	14.4	21.7	21.7	23
Total harmonic distortion (THD)	<3%	<3%	<3%	<3%
Power factor (rated power)	1	1	1	1
Displacement Power Factor	0.80 overexcited/0.80 underexcited	0.80 overexcited/0.80 underexcited	0.80 overexcited/0.80 underexcited	0.80 overexcited/0.80 underexcited
Efficiency				
MPPT efficiency	0.999	0.999	0.999	0.999
Inverter efficiency	0.976	0.976	0.976	0.96
Charge /discharger efficiency	0.94	0.94	0.94	0.94

HOME STORAGE SYSTEM SPECIFICATION

Battery data	S4	S8	S12	S12 NA
Normal voltage	48V	48V	48V	48V
Capacity	4kWh(adjustable)	8kWh(adjustable)	12kWh(adjustable)	12kWh(adjustable)
Battery type	Lithium(LFP)	Lithium(LFP)	Lithium(LFP)	Lithium(LFP)
DOD	80%	80%	80%	80%
Cycle life	6000	6000	6000	6000
HMI interface				
LCD	7" graphic LCD	7" graphic LCD	7" graphic LCD	4" graphic LCD
Mechanical				
L*W*H	700 X 400 X 1200 mm	640 X 700 X 1200 mm	900 X 700 X 1200 mm	1600 X 500 X 350 mm
Weight	150kg / 330 lbs	210kg / 463 lb	270kg / 596 lbs	200kg / 441 lbs
Others				
Operating temp. range [°C] inverter	-10~+50 (derating at 40)	-10~+50 (derating at 40)	-10~+50 (derating at 40)	-10~+50 (derating at 40)
Operating temp. range [°C] Battery	-10~+50	-10~+50	-10~+50	-10~+50
Storage stability range [°C]	-20~+60	-20~+60	-20~+60	-20~+60
Altitude [m]	<2000	<2000	<2000	<2000
Cooling concept	Forced airflow	Forced airflow	Forced airflow	Forced airflow
Noise emission (typical) [dB]	<40	<40	<40	<40
Degree of protection	IP20 (for indoor use)	IP20 (for indoor use)	IP20 (for indoor use)	IP20 (for indoor use)
Cell:	UL1642	UL1642	UL1642	UL1642
Module:	Refer UN38.3 and CE design	Refer UN38.3 and CE design	Refer UN38.3 and CE design	Refer UN38.3 and UL design
System:	Refer to CE design	Refer to CE design	Refer to CE design	Refer to UL design
Warranty	5 Year Option 5 yr. extension	5 Year Option 5 yr. extension	5 Year Option 5 yr. extension	5 Year Option 5 yr. extension

SOLUNA™

www.solunabattery.com

HAVE QUESTIONS? GIVE US A CALL: +86-21-57475835
OR E-MAIL: sales@solunabattery.com

No. 3492 JINQIAN ROAD,
SHANGHAI, CHINA 201406